

Supertech EVENGINE SCHEDULE TRACKER™

EVENGINE SCHEDULE TRACKER is a Utility program that imports schedule and baseline data (including cost and units of work) for selected activities and milestones from planning software such as Microsoft™ Office Project, Primavera™ or any other planning software using predefined Microsoft Office Excel Text CSV tables. **Tracker** then transforms the data into an easy to read Microsoft™ Office Excel spreadsheet matrix known, in the engineering business, as the “Buck Sheet”.

No more searching through numerous planning schedules, then transcribing the data to a worksheet table. Tracker automates the process then selectively calculates baseline variances for schedule, cost and units of work then presents in an easy to use tabular sheet.

Unique ID	Task Name	Start	Finish	Baseline Start	Baseline Finish	Late Start	Late Finish	CWBS	Column Group	Row Group	Stake Holder
1	Civil Works	28 Dec '07	28 Jul '10	28 Dec '07	28 May '10	28 Dec '07	9 Sep '11	C001	C00	CS	ABS Constructions
2	Pre-Tender	28 Dec '07	27 Oct '08	28 Dec '07	1 Aug '08	28 Dec '07	27 Oct '08	C001		CS	ABS Constructions
3	Prepare Expression Of Interest Doc	28 Dec '07	30 May '08	28 Dec '07	17 Apr '08	28 Dec '07	30 May '08	C001		CS	ABS Constructions
4	Issue Expression of Interest	30 May '08	30 May '08	17 Apr '08	17 Apr '08	30 May '08	30 May '08	C001	C01	CS	ABS Constructions
5					5 Jun '08	2 Jun '08	29 Aug '08	C001		CS	ABS Constructions
6					5 Jun '08	29 Aug '08	29 Aug '08	C001	C02	CS	ABS Constructions
7					3 Jul '08	2 Sep '08	29 Sep '08	C001		CS	ABS Constructions
8					1 Aug '08	30 Sep '08	27 Oct '08	C001		CS	ABS Constructions
9					1 Aug '08	27 Oct '08	27 Oct '08	C001	C03	CS	ABS Constructions
10					6 Oct '08	2 Jun '08	2 Jan '09	C001		CS	ABS Constructions
11					30 May '08	2 Jun '08	14 Jul '08	C001	C04	CS	ABS Constructions
12					30 May '08	2 Jun '08	14 Jul '08	C001		CS	ABS Constructions
13					30 May '08	14 Jul '08	14 Jul '08	C001	C05	CS	ABS Constructions
14					27 Jun '08	15 Jul '08	11 Aug '08	C001		CS	ABS Constructions
15					1 Aug '08	27 Oct '08	27 Oct '08	C001	C06	CS	ABS Constructions
16					29 Aug '08	28 Oct '08	24 Nov '08	C001		CS	ABS Constructions
17					29 Aug '08	24 Nov '08	24 Nov '08	C001	C07	CS	ABS Constructions
18					22 Sep '08	25 Nov '08	17 Dec '08	C001	C08	CS	ABS Constructions
19					22 Sep '08	25 Nov '08	17 Dec '08	C001	C09	CS	ABS Constructions
20					6 Oct '08	18 Dec '08	2 Jan '09	C001	C10	CS	ABS Constructions
21					6 Oct '08	2 Jan '09	2 Jan '09	C001	C11	CS	ABS Constructions
22					18 May '10	5 Jan '09	9 Sep '11	C001		CS	ABS Constructions
23					7 Oct '08	5 Jan '09	5 Jan '09	C001	C12	CS	ABS Constructions
24					19 Jan '09	6 Jan '09	14 Apr '09	C001		CS	ABS Constructions
25					20 Jan						
26					13 May						
27					8 Sep						
28					5 Jan						
29					17 Mar						
30					13 May '10	12 Jul '10	13 Jul '10	C001	C18	CS	ABS Constructions
31	Contract Close Out	27 Jul '10	28 Jul '10	28 May '10	28 May '10	8 Sep '11	9 Sep '11	C001	C19	CS	ABS Constructions

Easy to use and reusable Code and Category Template sheet to allow for grouping and display of report data.

File

Select File C:\Business\Products\Project Controls Software\Tracker Text Data\Microsoft Project 2007 Test Data\Contract

Status Date 24-Feb-2009

Milestone Settings Row Groups Text Customisation Other Options

Summary Code C00

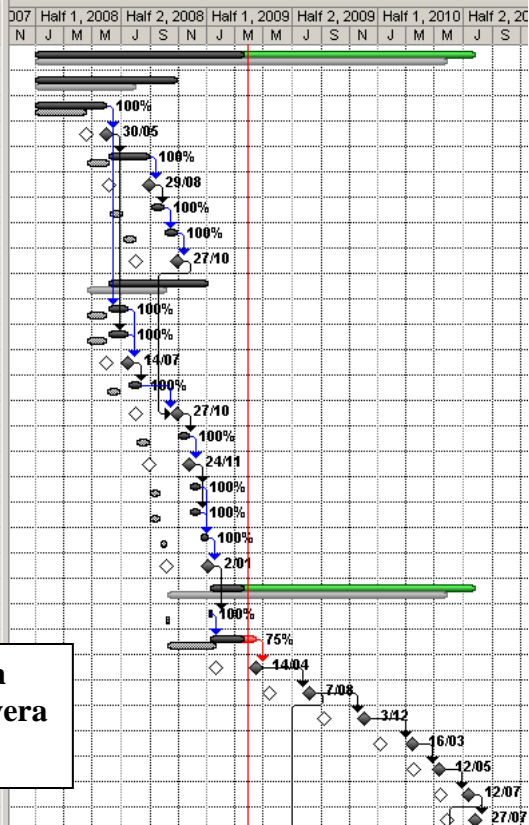
Milestone Category

- Pre Tender
- Tender
- Contract

Code	Description	Category
C01	Issue Expression of Interest	Pre Tender
C02	Expression of Interest Close	Pre Tender
C03	Contractor Short List Selected	Pre Tender
C04	Contract Specification & Documentation	Pre Tender
C05	Commercial Evaluation	Tender
C06	Contract Documentation Ready for Legal Review	Pre Tender

Create Report

Milestones are set up and selected from within the Microsoft Project or Primavera schedule.



EVENGINE SCHEDULE TRACKER REPORT CONVENTION

Report Title		CA Code		Additional Field		Report Sub-title		Status Date										
EVE Status Report Test Project						Document No & Revision		Doc. No EVE-001	Rev A	Status Date 28-Feb-2010								
Contract Code	Contract Description	VAC	VAC (Work)	Contractor	Date	Pre Tender		Tender		Contract		Contract 90% Physical Completion	Contract 100% Physical Completion	Contract Close Out				
						Issue Expression of Interest	Expression of Interest Close	Contractor Short List Selected	Issue Tender Document	Tender Close	Contract Final Negotiation & Formation				Contract Award	Mobilization Complete	Contract 50% Physical Completion	Contract 90% Physical Completion
CIVIL	C001 Civil Works Contract	BAC \$14,000,000	BACW 40,152	ABS Constructions	Baseline	02-Apr-2009	13-May-2009	10-Jul-2009	10-Dec-2009	04-Jan-2010	18-Jan-2010	18-Jan-2010	25-May-2010	14-Jan-2011	21-Jun-2011	27-Jul-2011	25-Aug-2011	
		EAC \$14,700,000	EACW 39,576		Actual/Forecast	02-Apr-2009 A	13-May-2009 A	10-Jul-2009 A	31-Dec-2009 A	22-Jan-2010 A	05-Feb-2010 A	05-Feb-2010 A	14-Jun-2010	02-Feb-2011	08-Jul-2011	08-Aug-2011	06-Sep-2011	
		VAC -\$700,000	VACW 576		Late Date	02-Apr-2009 A	13-May-2009 A	02-Dec-2009 A	31-Dec-2009 A	22-Jan-2010 A	05-Feb-2010 A	05-Feb-2010 A	14-Jun-2010	02-Feb-2011	08-Jul-2011	08-Aug-2011	15-Oct-2013	
		Overspend	Underspend		Total Float									0 D	0 D	0 D	0 D	770 D
		Status	On Time		On Time	On Time	Late (21 D)	Late (18 D)	Late (18 D)	Late (18 D)	Late (20 D)	Late (19 D)	Late (17 D)	Late (12 D)	Late (12 D)	Late (12 D)	Late (12 D)	Late (12 D)
SMP	C004 Piping Works Contract	BAC \$49,000,000	BACW 161,568	TBA	Baseline	09-Oct-2009	06-Nov-2009	07-Jan-2010	18-Jan-2010	15-Feb-2010	22-Mar-2010	27-Sep-2011	09-Nov-2011	06-Jan-2012	29-May-2012	10-Dec-2012	09-Jan-2013	
		EAC \$49,000,000	EACW 149,028		Actual/Forecast	29-Oct-2009 A	30-Nov-2009 A	27-Jan-2010 A	05-Feb-2010 A	05-Mar-2010	09-Apr-2010	13-Oct-2011	25-Nov-2011	24-Jan-2012	14-Jun-2012	20-Nov-2012	19-Dec-2012	
		VAC \$0	VACW 12,540		Late Date	18-May-2011 A	15-Jun-2011 A	10-Aug-2011 A	10-Aug-2011 A	07-Sep-2011	12-Oct-2011	13-Oct-2011	03-Apr-2012	31-May-2012	22-Oct-2012	20-Nov-2012	17-Dec-2013	
		On Budget	Underspend		Total Float				551 D	551 D	0 D	130 D	128 D	130 D	0 D	0 D	363 D	
		Status	Late (20 D)		Late (24 D)	Late (20 D)	Late (18 D)	Late (18 D)	Late (16 D)	Late (16 D)	Late (16 D)	Late (16 D)	Late (16 D)	Early (20 D)	Early (20 D)	Early (20 D)	Early (20 D)	
SMP	C003 Mechanical Works Contract	BAC \$65,000,000	BACW 117,520	Mech Tech	Baseline	24-Aug-2009	22-Sep-2009	08-Dec-2009	08-Dec-2009	07-Jan-2010	11-Feb-2010	22-Apr-2011	14-Jul-2011	20-Dec-2011	26-Jul-2012	24-Aug-2012	17-Sep-2012	
		EAC \$60,000,000	EACW 130,240		Actual/Forecast	14-Sep-2009 A	12-Oct-2009 A	29-Dec-2009 A	29-Dec-2009 A	27-Jan-2010 A	03-Mar-2010	06-Apr-2011	23-Aug-2011	05-Jan-2012	04-Sep-2012	03-Oct-2012	25-Oct-2012	
		VAC \$5,000,000	VACW -12,720		Late Date	06-Dec-2010 A	04-Jan-2011 A	18-Mar-2011 A	18-Mar-2011 A	15-Apr-2011 A	19-May-2011	20-May-2011	30-Aug-2011	03-Aug-2012	19-Nov-2012	25-Nov-2013	17-Dec-2013	
		Underspend	Overspend		Total Float				442 D	442 D	7 D	211 D	76 D	418 D	211 D	76 D	418 D	
		Status	Late (21 D)		Late (20 D)	Late (21 D)	Late (21 D)	Late (20 D)	Late (20 D)	Late (20 D)	Early (16 D)	Late (40 D)	Late (16 D)	Late (40 D)	Late (40 D)	Late (40 D)	Late (40 D)	Late (36 D)
SMP	C002 Structural Works Contract	BAC \$48,500,000	BACW 82,960	CBHI Constructions	Baseline	25-Nov-2009	14-Jan-2010	17-May-2010	29-Jun-2010	28-Jul-2010	15-Sep-2010	21-Sep-2010	21-Apr-2011	05-Dec-2011	09-May-2012	26-Jul-2012	07-Sep-2012	
		EAC \$49,400,000	EACW 85,360		Actual/Forecast	04-Nov-2009 A	23-Dec-2009 A	26-Apr-2010	08-Jun-2010	07-Jul-2010	24-Aug-2010	08-Oct-2010	05-Apr-2011	17-Nov-2011	23-Apr-2012	04-Sep-2012	17-Oct-2012	
		VAC -\$900,000	VACW -2,400		Late Date	05-Apr-2010 A	19-May-2010 A	22-Sep-2010	22-Sep-2010	20-Oct-2010	09-Dec-2010	10-Dec-2010	19-May-2011	08-Mar-2012	13-Aug-2012	25-Sep-2012	15-Oct-2013	
		Overspend	Overspend		Total Float		149 D	106 D	105 D	107 D	63 D	44 D	112 D	112 D	21 D	363 D		
		Status	Early (21 D)		Early (22 D)	Early (21 D)	Early (21 D)	Early (21 D)	Early (22 D)	Late (17 D)	Early (16 D)	Early (18 D)	Early (16 D)	Late (40 D)	Late (40 D)	Late (40 D)		
E&I	C005 Electrical Works Contract	BAC \$54,000,000	BACW 165,648	TBA	Baseline	15-Oct-2009	12-Nov-2009	13-Jan-2010	13-Jan-2010	10-Feb-2010	17-Mar-2010	28-Sep-2011	20-Apr-2012	21-Nov-2012	10-May-2013	05-Nov-2013	01-Jan-2014	
		EAC \$54,000,000	EACW 158,333		Actual/Forecast	04-Nov-2009 A	04-Dec-2009 A	02-Feb-2010 A	02-Feb-2010 A	02-Mar-2010	06-Apr-2010	14-Oct-2011	11-Apr-2012	01-Nov-2012	22-Apr-2013	16-Oct-2013	12-Dec-2013	
		VAC \$0	VACW 7,315		Late Date	18-Jul-2011 A	15-Aug-2011 A	10-Oct-2011 A	10-Oct-2011 A	07-Nov-2011	12-Dec-2011	13-Dec-2011	29-May-2012	20-Feb-2013	09-Aug-2013	21-Oct-2013	17-Dec-2013	
		On Budget	Underspend		Total Float				615 D	615 D	60 D	48 D	111 D	109 D	5 D	5 D		
		Status	Late (20 D)		Late (22 D)	Late (20 D)	Late (20 D)	Late (20 D)	Late (20 D)	Late (20 D)	Late (16 D)	Early (9 D)	Early (20 D)	Early (18 D)	Early (20 D)	Early (20 D)		

LEGEND:

For VAC & VAC Work [Variance At Completion]		Schedule End Milestone Status	
Overspend	Overspend EAC > BAC; EACW > BACW	Early (21 D)	Complete & Early
On Budget	On Budget EAC = BAC; EACW = BACW	On Time	Complete & On Time
Underspend	On Budget EAC < BAC; EACW < BACW	Late (21 D)	Complete & Late
For PP & P [Planned Profit] & [Profit]			
Profit	Expected Profit	Early (20 D)	Future & Early
Loss	Expected Loss	On Time	Future & On Time
Break Even	No Profit Or Loss	Late (40 D)	Future & Late

For Further Information visit or a trial request visit www.evengine.net